



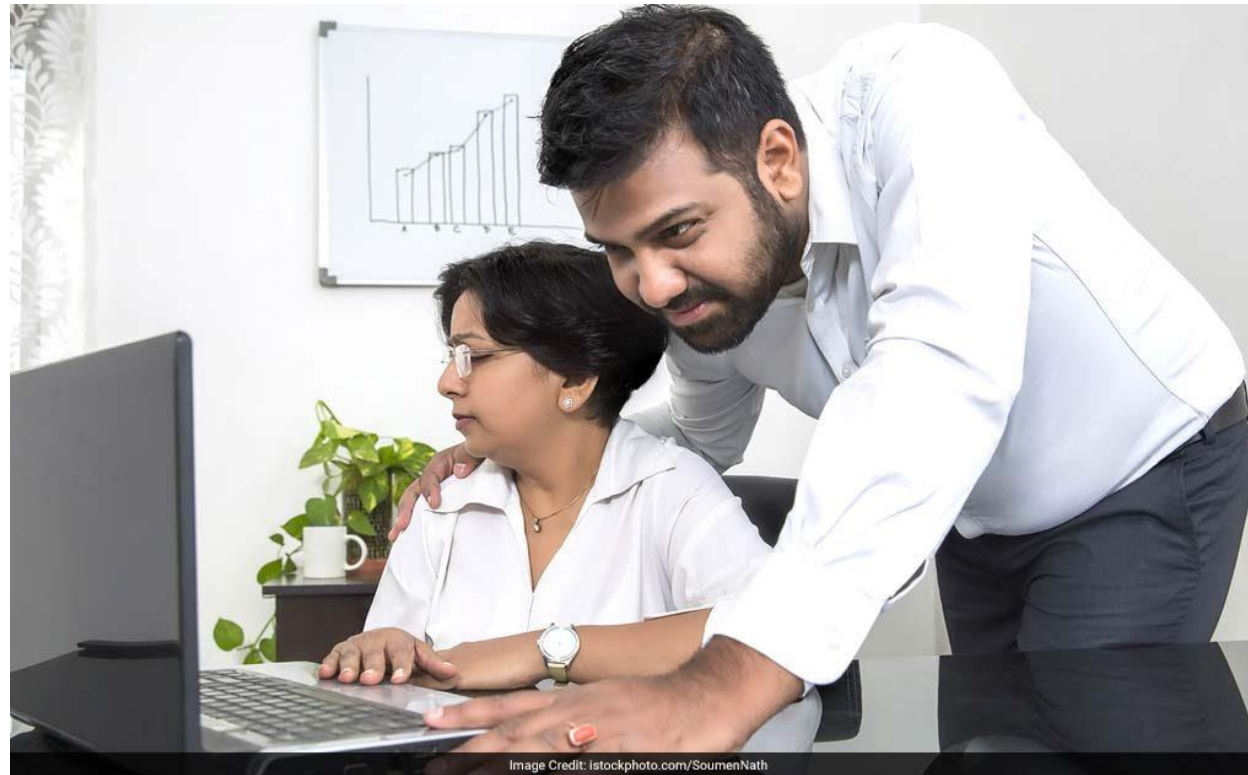
SEXUAL HARASSMENT

Corporate Cultural Training

CONTENTS

- Definition
- **Zero** Tolerance Harassment Policy
- International Labour Organization (ILO) – **Convention** Overview
- What **constitutes** the Sexual Harassment
- Important **facts** about Sexual Harassment
- **Listing** of Sexual Harassment in Higher Education Institutes
- Sexual Harassment Policy – **HEC** Policy Statement
- Establishing a **Procedure** for Harassment Complaints
- Harassment **Do's**
- Harassment **Don'ts**
- Education for **Prevention**

PERCEPTION - I



PERCEPTION - 2



PERCEPTION - 3



PERCEPTION - 4



WHAT IS HARASSMENT?

Harassment is

verbal or physical conduct

that shows hostility or aversion

toward

an individual or group of individuals

because of

that person's (or that person's relatives', friends', or associates')

race, skin color, religion, gender, national origin, age or disability

A ZERO TOLERANCE HARASSMENT POLICY

- Sexual harassment is only **one** type of harassment, and it, along with all other forms of harassment, should not be allowed in your workplace.
- **Just say “NO” to sexual harassment as the Law protects you**
(INTERNATIONAL LABOUR LAW CONVENTIONS)
- An important part of preventing harassment claims and protecting employees
is a **written policy stating that harassment will not be tolerated**

THANK YOU!

For Further Detail

Contact us at info@jyaconsulting.com

or give us a

Call at 0423 5757196-8

